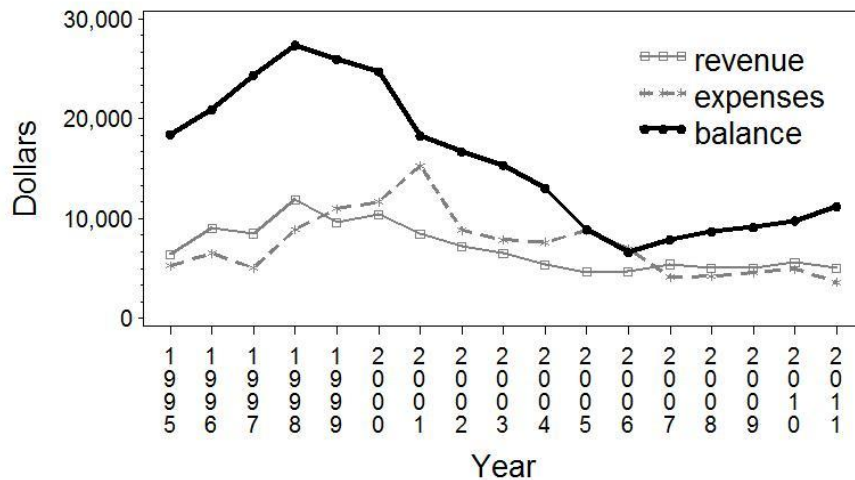


## ASA Statistical Consulting (CNSL) Section Treasurer's Report

Ann Lazar, Secretary/Treasurer, August 2012



The overall balance has been relatively stable since 2006, with expenses approximately equaling revenues. Note, ASA advised sections to reduce cash on-hand to no more than twice the annual operating expenses (for CNSL, usually \$5000-\$10000). Between 1999 thru 2006 cash on-hand has been reduced due to service increases, including additional travel awards. In 2001 a member survey was conducted, which caused a one year increase in expenses. From 1999 thru 2006, expenses exceeded revenues. Since 2006, CNSL cash-on-hand is roughly equal to expenses.

### Actual Revenue Expenses 1/1/11-12/31/11

#### Revenue:

Section Dues	\$4684
Interest and Dividends	\$371
Total Revenue	\$5055

#### Expenses:

Food for Business Meeting at JSM 2011	\$1317
Food for JSM Catering Business Meeting 2011	\$2142
Roundtable	\$165
Total Food Functions	\$3625

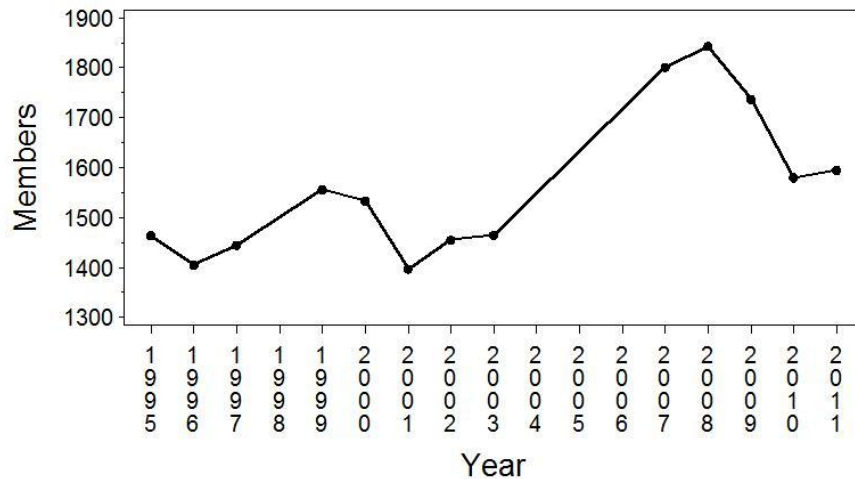
Net Surplus	\$1430
-------------	--------

---

**Fund Balance As of Dec 31, 2011: \$11205**

### CNSL Membership

Membership increased in 2008, most likely due to the offer for free membership. Between 1995 thru 2003, membership fluctuated between 1400-1600 members. In 2007 and 2008, new members exceeded expired members. In 2009, membership surged to approximately 1800.



	06/07	07/08	08/09	09/10	10/11	11/12*
<b>Member Add/Drop</b>						
8/1 thru 7/31 (*=7/25)						
New Members	507	663	707	454	375	375
Expired Members	-243	-304	-583	-629	-566	-403
Not in ASA	180	210	287	318	312	228
Still in ASA	63	94	296	311	254	175
Net Membership	+264	+359	+124	-175	-191	-28
<b>Total Membership on</b>						
8/1 (*=7/25)	1801	1843	1890	1737	1580	1596
Dues-paying			1314	1560	1513	1329
Free (no dues)			576	177	67	267